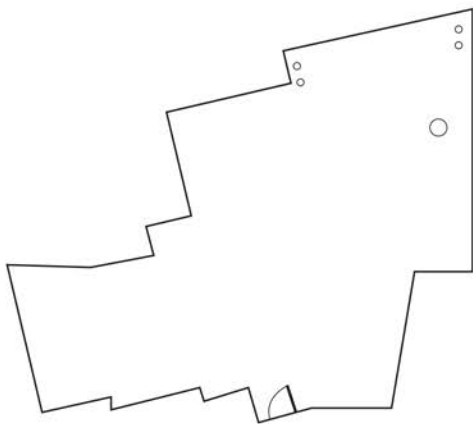


# Margaret Laurence



**882 square feet**

This room overlooks Gould Street and can accommodate 45 persons in a lecture style set up. It comes equipped with a built-in audio system, retractable projection screen and an LCD projector. The room's floating design and large windows are perfect for a casual reception, working lunch or training session.



## Capacity and Style

- 4 round tables of 8 persons
- Theatre style with 45 chairs
- Reception style holding 45 guests



## Equipment Available

- 1 LCD projector and screen
- 1 PA system
- 1 wireless microphone (hand-held)
- 1 podium
- Wireless internet